

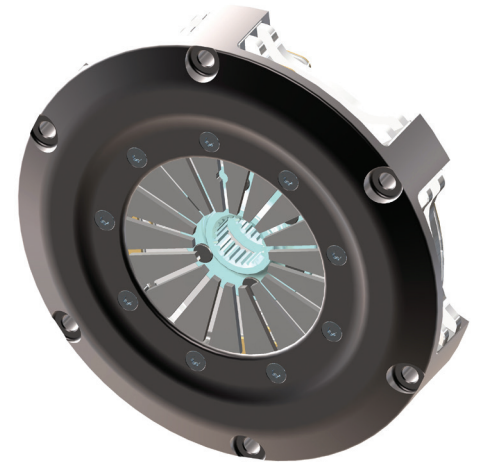
motorsport rally range **KKR1842**

ø184 (7.25") Twin plate rally clutch

Specifications

Part Number	Dynamic Torque Capacity Nm (lb/ft)	Release ratio	Assembly Weight inc. Driven Plate (Kg)	Assembly Inertia inc. Driven Plate (Kgm ²)	Release Load New ø44 Bearing (kN)	Release Load New ø52 Bearing (kN)
KKR1842HDGSR01	668 (492)	High	3.90	0.0225	3.2	3.4
KKR1842HSGSR01	554 (407)	High	3.90	0.0225	2.6	2.8
KKR1842HORSR01	440 (324)	High	3.90	0.0225	2.1	2.25
KKR1842UDGSR01	880 (649)	Ultra	3.90	0.0225	3.2	3.4
KKR1842USGSR01	730 (537)	Ultra	3.90	0.0225	2.6	2.8
KKR1842UORSR01	580 (427)	Ultra	3.90	0.0225	2.1	2.25

Step flywheel part numbers shown. For Pot flywheel replace "SR" with "PR".



Applications

General Race, Rally and Hill Climb use.

Replacement parts

Part Number	Pressure Plate (High Ratio)	Pressure Plate (Ultra High Ratio)	Pressure Plate Thickness (mm)	Pressure Plate Fulcrum Dia (mm)	Floater Plates
KKR1842HDGSR01	KPS184L6H511	N/A	13	ø157	KPS184L6F180
KKR1842HSGSR01	KPS184L6H511		13	ø157	KPS184L6F180
KKR1842HORSR01	KPS184L6H511		13	ø157	KPS184L6F180
KKR1842UDGSR01	N/A	KPS184L6U511	13	ø152	KPS184L6F180
KKR1842USGSR01		KPS184L6U511	13	ø152	KPS184L6F180
KKR1842UORSR01		KPS184L6U511	13	ø152	KPS184L6F180

Key features and benefits

- Compact design for low weight and inertia.
- High stiffness cover design for improved start line control.
- Open lug type design for improved cooling and dust removal.
- Durable hard anodised finish.
- Stainless steel wear plates fitted to cover legs.
- Interchangeable with other manufacturers' products.
- Step and Pot flywheel mounting options available.

Installation dimensions

