

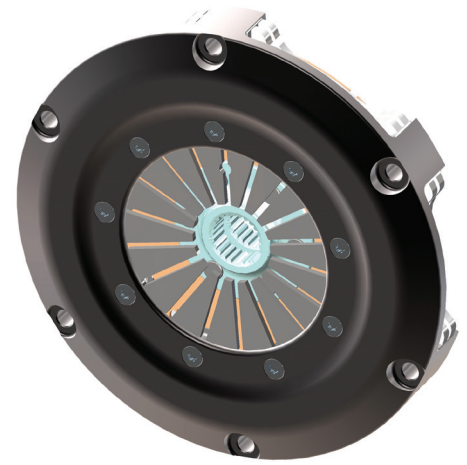
motorsport sintered range **KKS1842**

ø184 (7.25") Twin plate race clutch

Specifications

Part Number	Dynamic Torque Capacity Nm (lb/ft)	Release ratio	Assembly Weight inc. Driven Plate (Kg)	Assembly Inertia inc. Driven Plate (Kg ^m ²)	Release Load New ø44 Bearing (kN)	Release Load New ø52 Bearing (kN)
KKS1842HDGSR01	668 (492)	High	3.40	0.0210	3.2	3.4
KKS1842HSGSR01	554 (407)	High	3.40	0.0210	2.6	2.8
KKS1842HORSR01	440 (324)	High	3.40	0.0210	2.1	2.25
KKS1842UDGSR01	880 (449)	Ultra	3.40	0.0210	3.2	3.4
KKS1842USGSR01	730 (537)	Ultra	3.40	0.0210	2.6	2.8
KKS1842UORSR01	580 (427)	Ultra	3.40	0.0210	2.1	2.25

Step flywheel part numbers shown. For Pot flywheel replace "SR" with "PR". Other hub configurations are available.



Applications

Circuit Racing.

Replacement parts

Part Number	Pressure Plate (High Ratio)	Pressure Plate (Ultra High Ratio)	Pressure Plate Thickness (mm)	Pressure Plate Fulcrum Dia (mm)	Floater Plates
KKS1842HDGSR01	KPS184L6H444	N/A	11.25	ø157	KPS184L6F180
KKS1842HSGSR01	KPS184L6H444		11.25	ø157	KPS184L6F180
KKS1842HORSR01	KPS184L6H444		11.25	ø157	KPS184L6F180
KKS1842UDGSR01	N/A	KPS184L6U444	11.25	ø152	KPS184L6F180
KKS1842USGSR01		KPS184L6U444	11.25	ø152	KPS184L6F180
KKS1842UORSR01		KPS184L6U444	11.25	ø152	KPS184L6F180

Key features and benefits

- Compact design for low weight and inertia.
- High stiffness cover design for improved start line control.
- Open lug type design for improved cooling and dust removal.
- Durable hard anodised finish.
- Stainless steel wear plates fitted to cover legs.
- Interchangeable with other manufacturers' product.
- Step and Pot flywheel mounting options available.

Installation dimensions

