

CAL21 series

Park brake caliper

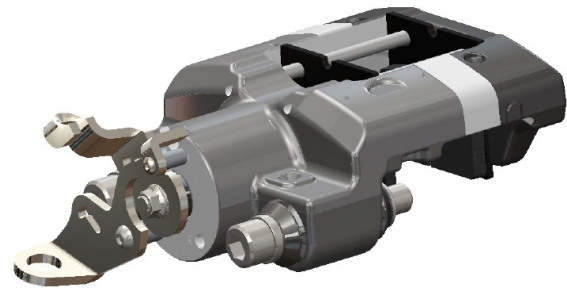


The CAL21 series caliper can be tailored for a wide range of applications with various disc sizes available.

Installation drawings and models are available upon request.

Specifications

Caliper material	Cast aluminium
Number of pistons	1
Piston diameters	38mm
Disc diameter range	200mm to 400mm
Disc thickness range	12mm to 40mm
Pad thickness	9mm
Pad area	21cm ²
Assembled weight	1.9kg



Applications

SUV, armoured vehicles, defence, emergency services, ground support, specialist applications

Key features and benefits

- Lug mount through slide pin bolts or via separate bracket.
- Hanging pads with anti-rattle clips.
- Hard anodised with additional paint option.
- EPDM seal material.
- Up to 9000N clamp load.

Installation dimensions

